

## Snow-Capped Mountains in the Distance

*A room with a mountain view. Snow-capped mountains can be seen in the distance and fresh mountain air fills the room!*

For Rows 10 - 17 the intarsia method of colour changing is used. This ensures neat and crisp colour changes between the mountains and sky and avoids trailing yarn across the work. Each patch of colour is crocheted using a different piece of yarn.

You will need to cut separate lengths of yarn as indicated and wind them into little balls. You may need longer lengths than indicated if your tension is looser.

**Yarn H:** 1 x 400cm length for use of the left side stitches and 2 x 600cm lengths for use either side of the central mountain. You can use the main ball of Yarn H without cutting it for the stitches to the right side.

**Yarn B:** 1 x 550cm length for use on the left mountain and 1 x 600cm length for use on the central mountain. You can use the main ball of Yarn B without cutting into smaller piece for the mountain on the right.

**Ecru/Cream:** 2 x 100cm for use at the top of the left and right mountains and 1 x 200cm for use at the top of the centre mountain.

Make sure you keep the non-working yarn to the back (WS) of the work.

Using **Yarn A** make 53ch.

**Row 1 (WS)** 1tr in 4th ch from hook (the 3 missed ch count as first tr), 1tr in each ch to end, join with **Yarn G** at end of final st, turn. [51 sts]

**Row 2 (RS)** 3ch (counts as first tr here and throughout), 1tr in next st and each st to end, turn.

**Row 3 (WS)** Repeat Row 2.

**Row 4 (RS)** 4ch (counts as first dtr), \* 1tr in each of next 2 sts, 1htr in each of next 2 sts, 1dc in next st, 1htr in each of next 2 sts, 1tr in each of next 2 sts, 1dtr in next st, repeat from \* four times, turn.

**Row 5 (WS)** 3ch, 1tr in first st at base of 3 ch, \* 1tr in each of next 3 sts, tr3tog over next 3 sts, 1tr in

each of next 3 sts, 3tr in next st, repeat from \* three times, 1tr in each of next 3 sts, tr3tog over next 3 sts, 1tr in each of next 3 sts, 2tr in final st, turn.

**Row 6 (RS)** Repeat Row 5.

**Row 7 (WS)** 3ch, 1tr in first st at base of 3 ch, \* 1tr in each of next 3 sts, dc3tog over next 3 sts, 1tr in each of next 3 sts, 3dtr in next st, repeat from \* three times, 1tr in each of next 3 sts, dc3tog over next 3 sts, 1tr in each of next 3 sts, 2tr in final st, join with main ball of **Yarn B** at end of final st, turn.

**Row 8 (RS)** 1ch (does not count as st), 1dc in blo of first st, \* 1htr in blo of each of next 2 sts, 1tr in blo of next st, 1dtr in blo of each of next 3 sts, 1tr in blo of next st, 1htr in blo of each of next 2 sts, 1dc in blo of

next st, repeat from \* four times, turn.

**Row 9 (WS)** 3ch, 1tr in next st and each st to end, turn.

**Row 10 (RS)** 3ch, 1tr in each of next 15 sts changing to first 600cm little ball of **Yarn H**, 1tr in next st changing to first 600cm little ball of **Yarn B**, 1tr in each of next 17 sts changing to second 600cm little ball of **Yarn H**, 1tr in next st changing to second 550cm little ball of **Yarn B**, 1tr in each of next 16 sts, join with third 400cm ball of **Yarn H** at end of final st, turn. All the little balls of **Yarn B** and **Yarn H** are now attached. When changing colours change to the ball of yarn which is allocated to the block of colour you're working on. This means there will be no ends trailing across the back of the work.

Use the chart for reference.

**Row 11 (WS)** 3ch, 1tr in next st, change to **Yarn B**, 1tr in each of next 13 sts, change to **Yarn H**, 1tr in each of next 3 sts, change to **Yarn B**, 1tr in each of next 15 sts, change to **Yarn H**, 1tr in each of next 3 sts, change to **Yarn B**, 1tr in each of next 13 sts, change to main ball of **Yarn H**, 1tr in each of final 2 sts, turn.

**Row 12 (RS)** 3ch, 1tr in each of next 2 sts, change to **Yarn B**, 1tr in each of next 11 sts, change to **Yarn H**, 1tr in each of next 5 sts, change to **Yarn B**, 1tr in each of next 13 sts, change to **Yarn H**, 1tr in each of next 5 sts, change to **Yarn B**, 1tr in each of next 11 sts, change to **Yarn H**, 1tr in each of final 3 sts, turn.

**Row 13 (WS)** 3ch, 1tr in each of next 3 sts, change to **Yarn B**, 1tr in each of next 9 sts, change to **Yarn H**, 1tr in each of next 7 sts, change to **Yarn B**, 1tr in each of next 11 sts, change to **Yarn H**, 1tr in each of next 7 sts, change to **Yarn B**, 1tr in each of next 9 sts, change to **Yarn H**, 1tr in each of final 4 sts, turn.

**Row 14 (RS)** 3ch, 1tr in each of next 4 sts, change to **Yarn B**, 1tr in each of next 7 sts, change to **Yarn H**, 1tr in each of next 9 sts, change to **Yarn B**, 1tr in each of next 9 sts, change to **Yarn H**, 1tr in each of next 9 sts, change to **Yarn B**, 1tr in each of next 7 sts, change to **Yarn H**, 1tr in each of final 5 sts, turn.

**Row 15 (WS)** 3ch, 1tr in each of next 5 sts, change to first little ball

of **Ecrú/Cream**, 1tr in each of next 5 sts, change to **Yarn H**, 1tr in each of next 11 sts, change to second little ball of **Ecrú/Cream**, 1tr in each of next 7 sts, change to **Yarn H**, 1tr in each of next 11 sts, change to third little ball of **Ecrú/Cream**, 1tr in each of next 5 sts, change to **Yarn H**, 1tr in each of final 6 sts, turn.

**Row 16 (RS)** 3ch, 1tr in each of next 6 sts, change to **Ecrú/Cream**, 1tr in each of next 3 sts, change to **Yarn H**, 1tr in each of next 13 sts, change to **Ecrú/Cream**, 1tr in each of next 5 sts, change to **Yarn H**, 1tr in each of next 13 sts, change to **Ecrú/Cream**, 1tr in each of next 3 sts, change to **Yarn H**, 1tr in each of final 7 sts, turn.

**Row 17 (WS)** 3ch, 1tr in each of next 7 sts, change to **Ecrú/Cream**, 1tr in next st, change to **Yarn H**, 1tr in each of next 15 sts, change to **Ecrú/Cream**, 1tr in each of next 3 sts, change to **Yarn H**, 1tr in each of next 15 sts, change to **Ecrú/Cream**, 1tr in next st, change to **Yarn H**, 1tr in each of final 8 sts, turn.

*In Row 18 you can continue using the main ball of Yarn H all the way along.*

**Row 18 (RS)** 3ch, 1tr in each of next 24 sts, change to **Ecrú/Cream**, 1tr in next st, change back to **Yarn H**, 1tr in each of next 25 sts, turn.

**Row 19 (WS)** 3ch, 1tr in next st and each st to end, turn.

**Row 20 (RS)** 3ch, 1tr in next st and each st to end, fasten off.

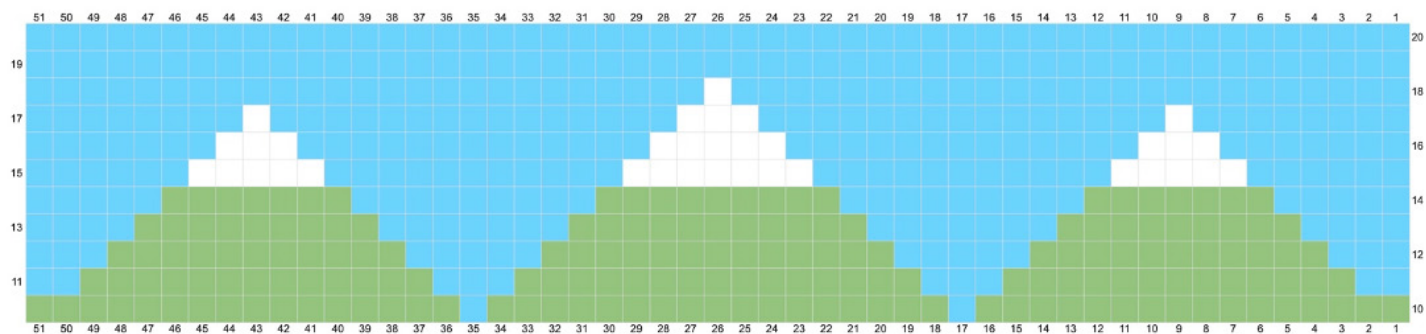
**Row 21 (RS)** Keep RS facing and go back to beginning of Row 20, join **Yarn A** into first st (the top of the first 3 ch), 3ch, 1tr in next st and each st to end, turn.

**Row 22 (WS)** 2ch (counts as first htr), 1htr in next st and each st to end, turn.

## BORDER

**Round 1 (RS)** 1ch (does not count as st), miss first st, ss into next st, 3ch (counts as first tr), 2tr in same st, (miss 2 sts, 3tr in next st) to end, miss final st of side, 2ch (first corner made), rotate work ready to crochet down side edge, continue down side edge with 12 groups of 3tr evenly spaced across the rows to bottom, 2ch (second corner), rotate work ready to crochet across bottom edge, miss base of first st, 3tr in base of next st, (miss base of next 2 sts, 3tr in base of next st) until end of side, miss final st, 2ch (third corner), rotate work ready to crochet up next side edge, continue with 12 groups of 3tr evenly spaced across the rows, 2ch (final corner), ss to top of first 3 ch, turn. [17 groups of 3-tr along top and bottom, 12 groups of 3-tr on each side edge with 4 x corner 2-ch-sps]

**Round 2 (WS)** 3ch (counts as first tr), \*(2tr, 1ch, 2tr) in corner ch-sp, 1tr in each st to end of side, repeat from \* three times, ss to top of first 3 ch, fasten off. [55 sts along top and bottom and 40 sts on each side edge with 4 x corner 1-ch-sps]



On the chart each square represents 1 tr stitch.  
 We begin on a RS row. Read RS rows from  
 right to left and WS rows from left to right. Each  
 row begins with 3ch which counts as the first st.

Change colour at the final yoh of the stitch  
 before the next colour.



## A Desert View

*A room with a view across the desert. Maybe it's a hotel room. It's hot outside but it's cool in the room as you gaze across the dry landscape...*

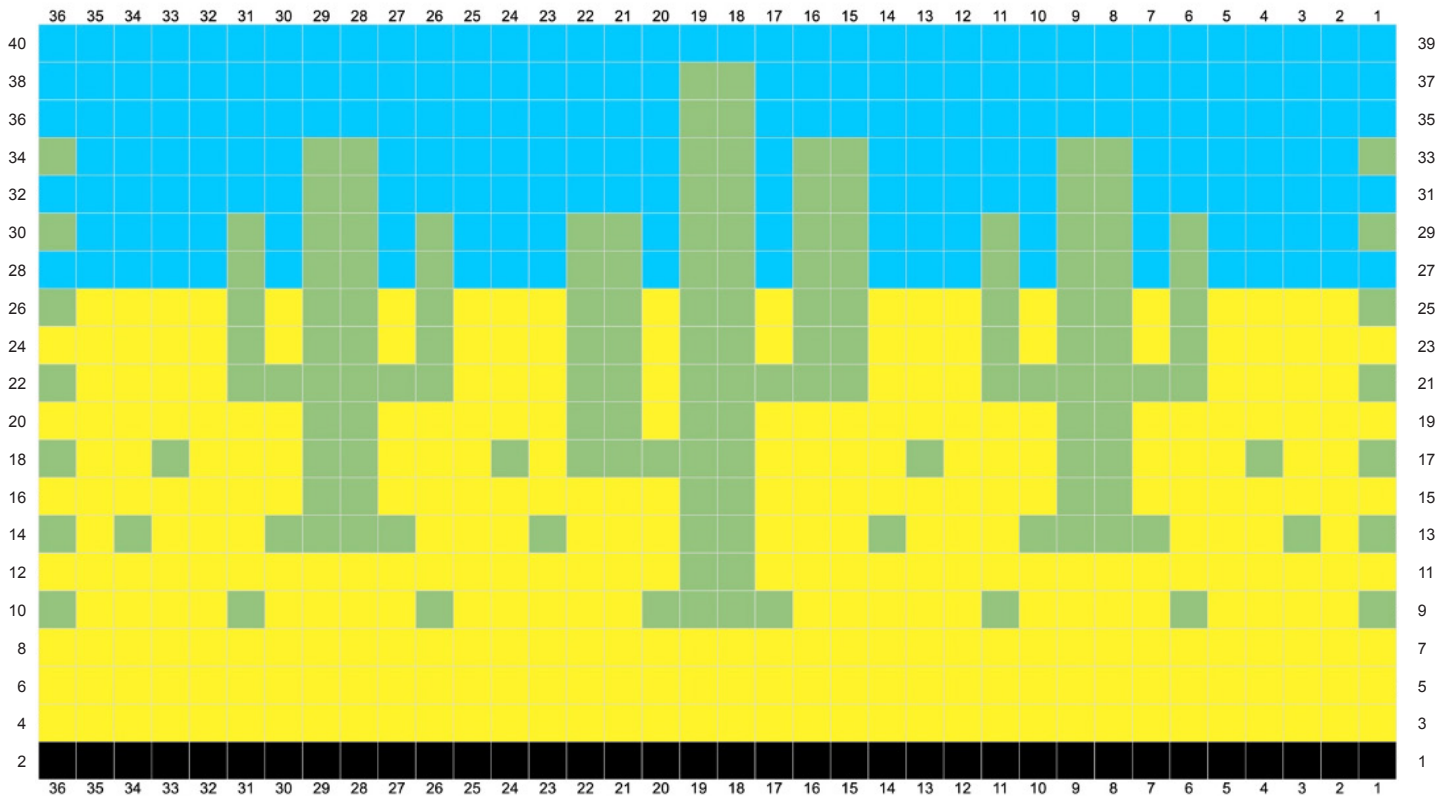
*This square is crocheted using the technique of inset Mosaic Crochet. Written instructions continue here but there is also a chart to follow if preferred.*

*I recommend using half a hook size larger than the hook you're using for the rest of the blanket. Mosaic crochet produces a dense fabric.*

*On the chart each square represents 1 stitch (either a double crochet, mosaic treble or chain-space). Each row on the chart represents TWO rows of crochet. Read RS rows from right to left and WS rows from left to right. Each row begins with 1 ch and then 1 dc in first st, and each row ends with 1 dc in final st.*

*The first square on the RS rows indicates the colour to be used for that row. Do not fasten off the yarn at the end of each row, the yarn will be carried up along the side of the work to be joined again on subsequent rows.*

*On RS rows if the square is the same colour as the yarn being used work either a double crochet or mosaic treble. If the square is in the contrasting colour work 2 chains for 1 square, 3 chains for 2 squares, 4 chains for 3 squares etc and miss the corresponding stitches.*



Using **Yarn A** and a hook half a hook size larger, make 37ch.

**Row 1 (RS)** 1 dc in 2nd ch from hook and in each ch to end, turn. [36 sts]

**Row 2 (WS)** 1 ch (does not count as st here and throughout), 1 dc in each st, join with **Yarn C** at end of final st, turn. [36 sts]

**Rows 3 - 7** 1 ch, 1 dc in each st, turn.

**Row 8 (WS)** 1 ch, 1 dc in each st, join with **Yarn B** at end of final st, turn. [36 sts]

**Row 9 (RS)** 1 ch, 1 dc in first st, (5ch, miss 4 sts, 1 dc in next st) 2 times, 6ch, miss 5 sts, 1 dc in each of next 4 sts, 6ch, miss 5 sts, 1 dc in next st, (5ch, miss 4 sts, 1 dc in next st) 2 times, turn.

**Row 10 (WS)** 1 ch, 1 dc in first st, (5ch, miss 5-ch-sp, 1 dc in next st) 2 times, 6ch, miss 6-ch-sp, 1 dc in each of next 4 sts, 6ch, miss 6-ch-sp, 1 dc in next st, (5ch, miss 5-ch-sp, 1 dc in next st) 2 times, re-join with **Yarn C** at end of final st, turn.

**Row 11 (RS)** 1 ch, 1 dc in first st, (1 mtr in each of next 4 sts, 1 dc in next st) 2 times, 1 mtr in each of next 5 sts, 1 dc in next st, 3ch, miss 2 sts, 1 dc in next st, 1 mtr in each of next 5 sts, 1 dc in next st, (1 mtr in each of next 4 sts, 1 dc in next st) 2 times, turn.

**Row 12 (WS)** 1 ch, 1 dc in first 17 sts, 3ch, miss 3-ch-sp, 1 dc in each of next 17 sts, re-join with **Yarn B** at end of final st, turn.

**Row 13 (RS)** 1 ch, 1 dc in first st, 2ch, miss 1 st, 1 dc in next st, 4ch, miss 3 sts, 1 dc in each of next 4 sts, 4ch, miss 3 sts, 1 dc in next st, 4ch, miss 3 sts, 1 mtr in each of next 2 sts, (4ch, miss 3 sts, 1 dc in next st) 2 times, 1 dc in each of next 3 sts, 4ch, miss 3 sts, 1 dc in next st, 2ch, miss 1 st, 1 dc in final st, turn.

**Row 14 (WS)** 1 ch, 1 dc in first st, 2ch, miss 2-ch-sp, 1 dc in next st, 4ch, miss 4-ch-sp, 1 dc in each of next 4 sts, 4ch, miss 4-ch-sp, 1 dc in next st, 4ch, miss 4-ch-sp, 1 dc in each of next 2 sts, (4ch, miss 4-ch-sp, 1 dc in next st) 2 times, 1 dc in each of next 3 sts, 4ch, miss 4-ch-sp, 1 dc in next st, 2ch, miss 2-ch-sp, 1 dc in final st, re-join with **Yarn C** at end of final st, turn.

**Row 15 (RS)** 1 ch, 1 dc in first st, 1 mtr in next st, 1 dc in next st, 1 mtr in each of next 3 sts, 1 dc in next st, 3ch, miss 2 sts, (1 dc in next st, 1 mtr in each of next 3 sts) 2 times, 3ch, miss 2 sts, (1 mtr in each of next 3 sts, 1 dc in next st) 2 times, 3ch, miss 2 sts, 1 dc in next st, 1 mtr in each of next 3 sts, 1 dc in next st, 1 mtr in next st, 1 dc in final st, turn.

**Row 16 (WS)** 1 ch, 1 dc in first 7 sts, (3ch, miss 3-ch-sp, 1 dc in each of next 8 sts) 2 times, 3ch, miss 3-ch-sp, 1 dc in each of next 7 sts, re-join with **Yarn B** at end of final st, turn.

**Row 17 (RS)** 1 ch, 1 dc in first st, 3ch, miss 2 sts, 1 dc in next st, 4ch, miss 3 sts, 1 mtr in each of next 2 sts, 4ch, miss 3 sts, 1 dc in next st, 5ch, miss 4 sts, 1 mtr in each of next 2 sts, 1 dc in each of next 3 sts, 2ch, miss 1 st, 1 dc in next st, 4ch, miss 3 sts, 1 mtr in each of next 2 sts, 4ch, miss 3 sts, 1 dc in next st, 3ch, miss 2 sts, 1 dc in final st, turn.

**Row 18 (WS)** 1 ch, 1 dc in first st, 3ch, miss 3-ch-sp, 1 dc in next st, 4ch, miss 4-ch-sp, 1 dc in each of next 2 sts, 4ch, miss 4-ch-sp, 1 dc in next st, 2ch, miss 2-ch-sp, 1 dc in each of next 5 sts, 5ch, miss 5-ch-sp, 1 dc in next st, 4ch, miss 4-ch-sp, 1 dc in each of next 2 sts, 4ch, miss 4-ch-sp, 1 dc in next st, 3ch, miss 3-ch-sp, 1 dc in final st, re-join with **Yarn C** at end of final st, turn.

**Row 19 (RS)** 1 ch, 1 dc in first st, 1 mtr in each of next 2 sts, 1 dc in next st, 1 mtr in each of next 3 sts, 3ch, miss 2 sts, 1 mtr in each of next 3 sts, 1 dc in next st, 1 mtr in each of next 4 sts, 3ch, miss 2 sts, 1 dc in next st, 3ch, miss 2 sts, 1 mtr in next st, 1 dc in next st, 1 mtr in each of next 3 sts, 3ch, miss 2 sts, 1 mtr in each of next 3 sts, 1 dc in next st, 1 mtr in each of next 2 sts, 1 dc in final st, turn.

**Row 20 (WS)** 1 ch, 1 dc in first 7 sts, 3ch, miss 3-ch-sp, 1 dc in each of next 5 sts, 3ch, miss 3-ch-sp, 1 dc in next st, 3ch, miss 3-ch-sp, 1 dc in each of next 8 sts, 3ch, miss 3-ch-sp, 1 dc in each of next 7 sts, re-join with **Yarn B** at end of final st, turn.

**Row 21 (RS)** 1 ch, 1 dc in first st, 5ch, miss 4 sts, 1 dc in each of next 2 sts, 1 mtr in each of next 2 sts, 1 dc in each of next 2 sts, 4ch, miss 3 sts, 1 dc in each of next 3 sts, 1 mtr in each of next 2 sts, 2ch, miss 1 st, 1 mtr in each of next 2 sts, 4ch, miss 3 sts, 1 dc in each of next 2 sts, 1 mtr in each of next 2 sts, 1 dc in each of next 2 sts, 5ch, miss 4 sts, 1 dc in final st, turn.

**Row 22 (WS)** 1 ch, 1 dc in first st, 5ch, miss 5-ch-sp, 1 dc in each of next 6 sts, 4ch, miss 4-ch-sp, 1 dc in each of next 2 sts, 2ch, miss 2-ch-sp, 1 dc in each of next 5 sts, 4ch,

miss 4-ch-sp, 1 dc in each of next 6 sts, 5ch, miss 5-ch-sp, 1 dc in final st, re-join with **Yarn C** at end of final st, turn.

**Row 23 (RS)** 1 ch, 1 dc in first st, 1 mtr in each of next 4 sts, 2ch, miss 1 st, 1 dc in next st, 3ch, miss 2 sts, 1 dc in next st, 2ch, miss 1 st, 1 mtr in each of next 3 sts, 3ch, miss 2 sts, 1 dc in next st, 3ch, miss 2 sts, 1 mtr in next st, 3ch, miss 2 sts, 1 mtr in each of next 3 sts, 2ch, miss 1 st, 1 dc in next st, 3ch, miss 2 sts, 1 dc in next st, 2ch, miss 1 st, 1 mtr in each of next 4 sts, 1 dc in final st, turn.

**Row 24 (WS)** 1 ch, 1 dc in first 5 sts, 2ch, miss 2-ch-sp, 1 dc in next st, 3ch, miss 3-ch-sp, 1 dc in next st, 2ch, miss 2-ch-sp, 1 dc in each of next 3 sts, (3ch, miss 3-ch-sp, 1 dc in next st) 3 times, 1 dc in each of next 2 sts, 2ch, miss 2-ch-sp, 1 dc in next st, 3ch, miss 3-ch-sp, 1 dc in next st, 2ch, miss 2-ch-sp, 1 dc in each of next 5 sts, re-join with **Yarn B** at end of final st, turn.

**Row 25 (RS)** 1 ch, 1 dc in first st, 5ch, miss 4 sts, 1 mtr in next st, 2ch, miss 1 st, 1 mtr in each of next 2 sts, 2ch, miss 1 st, 1 mtr in next st, 4ch, miss 3 sts, 1 mtr in each of next 2 sts, (2ch, miss 1 st, 1 mtr in each of next 2 sts) 2 times, 4ch, miss 3 sts, 1 mtr in next st, 2ch, miss 1 st, 1 mtr in each of next 2 sts, 2ch, miss 1 st, 1 mtr in next st, 5ch, miss 4 sts, 1 dc in final st, turn.

**Row 26 (WS)** 1 ch, 1 dc in first st, 5ch, miss 5-ch-sp, 1 dc in next st, 2ch, miss 2-ch-sp, 1 dc in each of next 2 sts, 2ch, miss 2-ch-sp, 1 dc in next st, 4ch, miss 4-ch-sp, 1 dc in each of next 2 sts, (2ch, miss 2-ch-sp, 1 dc in each of next 2 sts)

2 times, 4ch, miss 4-ch-sp, 1 dc in next st, 2ch, miss 2-ch-sp, 1 dc in each of next 2 sts, 2ch, miss 2-ch-sp, 1 dc in next st, 5ch, miss 5-ch-sp, 1 dc in final st, join with **Yarn J** at end of final st, turn.

**Row 27 (RS)** 1 ch, 1 dc in first st, 1 mtr in each of next 4 sts, 2ch, miss 1 st, 1 mtr in next st, 3ch, miss 2 sts, 1 mtr in next st, 2ch, miss 1 st, 1 mtr in each of next 3 sts, (3ch, miss 2 sts, 1 mtr in next st) 3 times, 1 mtr in each of next 2 sts, 2ch, miss 1 st, 1 mtr in next st, 3ch, miss 2 sts, 1 mtr in next st, 2ch, miss 1 st, 1 mtr in each of next 4 sts, 1 dc in final st, turn.

**Row 28 (WS)** 1 ch, 1 dc in first 5 sts, 2ch, miss 2-ch-sp, 1 dc in next st, 3ch, miss 3-ch-sp, 1 dc in next st, 2ch, miss 2-ch-sp, 1 dc in each of next 3 sts, (3ch, miss 3-ch-sp, 1 dc in next st) 3 times, 1 dc in each of next 2 sts, 2ch, miss 2-ch-sp, 1 dc in next st, 3ch, miss 3-ch-sp, 1 dc in next st, 2ch, miss 2-ch-sp, 1 dc in each of next 5 sts, re-join with **Yarn B** at end of final st, turn.

**Rows 29 - 30** Repeat Rows 25 - 26

**Row 31 (RS)** 1 ch, 1 dc in first st, 1 mtr in each of next 4 sts, 1 dc in next st, 1 mtr in next st, 3ch, miss 2 sts, 1 mtr in next st, 1 dc in next st, 1 mtr in each of next 3 sts, (3ch, miss 2 sts, 1 mtr in next st) 2 times, 1 dc in each of next 2 sts, 1 mtr in each of next 3 sts, 1 dc in next st, 1 mtr in next st, 3ch, miss 2 sts, 1 mtr in next st, 1 dc in next st, 1 mtr in each of next 4 sts, 1 dc in final st, turn.

**Row 32 (WS)** 1 ch, 1 dc in first 7 sts, 3ch, miss 3-ch-sp, 1 dc in each

of next 8 sts, (3ch, miss 3-ch-sp, 1 dc in next st) 2 times, 1 dc in each of next 4 sts, 3ch, miss 3-ch-sp, 1 dc in each of next 7 sts, re-join with **Yarn B** at end of final st, turn.

**Row 33 (RS)** 1 ch, 1 dc in first st, 7ch, miss 6 sts, 1 mtr in each of next 2 sts, 6ch, miss 5 sts, 1 mtr in each of next 2 sts, 2ch, miss 1 st, 1 mtr in each of next 2 sts, 9ch, miss 8 sts, 1 mtr in each of next 2 sts, 7ch, miss 6 sts, 1 dc in final st, turn.

**Row 34 (WS)** 1 ch, 1 dc in first st, 7ch, miss 7-ch-sp, 1 dc in each of next 2 sts, 9ch, miss 9-ch-sp, 1 dc in each of next 2 sts, 2ch, miss 2-ch-sp, 1 dc in each of next 2 sts, 6ch, miss 6-ch-sp, 1 dc in each of next 2 sts, 7ch, miss 7-ch-sp, 1 dc in final st, re-join with **Yarn J** at end of final st, (fasten off **Yarn B**), turn.

**Row 35 (RS)** 1 ch, 1 dc in first st, 1 mtr in each of next 6 sts, 1 dc in each of next 2 sts, 1 mtr in each of next 5 sts, 1 dc in each of next 2 sts, 1 mtr in next st, 3ch, miss 2 sts, 1 mtr in each of next 8 sts, 1 dc in each of next 2 sts, 1 mtr in each of next 6 sts, 1 dc in final st, turn.

**Row 36 (WS)** 1 ch, 1 dc in first 17 sts, 3ch, miss 3-ch-sp, 1 dc in each of next 17 sts, (do not change colour), turn.

*For the central cactus in Rows 37 and 38 only a small amount of Yarn B is used in the middle of the row as indicated.*

**Row 37 (RS)** 1 ch, 1 dc in first 17 sts, change to **Yarn B**, 1 mtr in each of next 2 sts, change back to **Yarn J** (do not fasten off **Yarn B**), 1 dc in each of next 17 sts, turn.

**Row 38 (WS)** 1ch, 1dc in first 17 sts, change to **Yarn B**, 1dc in each of next 2 sts, change back to Yarn J (fasten off **Yarn B**), 1dc in each of next 17 sts, turn.

**Rows 39 - 40** 1ch, 1dc in each st to end, turn.

*Now change back to the hook size used for the rest of the blanket for the remainder of the square.*

**Row 41 (RS)** 3ch, 1tr in next st and each st to end, turn.

**Rows 42 - 44** Repeat Row 41 three times, at the end of Row 44 join with **Yarn A**, turn.

## BORDER

**Round 1 (RS)** 1ch (does not count as st), miss first st, ss into next st, 3ch (counts as first tr), 2tr in same st, (miss 2 sts, 3tr in next st) to end, miss final st of side, 2ch (first corner made), rotate work ready to crochet down side edge, continue down side edge with 12 groups of 3tr evenly spaced across the rows to bottom, 2ch (second corner), rotate work ready to crochet across bottom edge, miss base of first st, 3tr in base of next st, (miss base of next 2 sts, 3tr in base of next st) until end of side, miss final st, 2ch (third corner), rotate work ready to crochet up next side edge, continue with 12 groups of 3tr evenly spaced across the rows, 2ch (final corner),

ss to top of first 3 ch, turn. [12 groups of 3-tr on each side with 4 x corner 2-ch-sps]

**Round 2 (WS)** 3ch (counts as first tr), \*(2tr, 1ch, 2tr) in corner ch-sp, 1tr in each st to end of side, repeat from \* three times, ss to top of first 3 ch, fasten off. [55 sts along top and bottom and 40 sts on each side edge with 4 x corner 1-ch-sps]

## SUN

Using **Yarn C**, make a magic ring. Round 1 (RS) 4ch (does not count as st), 16dtr into the ring, ss to top of first dtr to join, fasten off [16 sts] Using photo as a guide, sew sun onto main square.



## Joining the Rectangles and Squares

*All the rectangles and squares will now be joined. Lay out the rectangles and squares using photo as a guide.*

Start with View 1 (the main central rectangle) and join it to View 2. Position the top of View 2 so it touches the bottom of View 1. Place the WS facing together and RS facing outwards, with the edges held ready to crochet them together.

### JOINING RECTANGLES

Join **Yarn A** into the outer right corner ch-sp of the front rectangle only, 1 ch, insert hook into corresponding corner ch-sp on back rectangle, make 1 ss followed by 1 ch, 1 ss in first st on front rectangle, 1 ch, miss first st on back rectangle, 1 ss in next st on back rectangle, 1 ch, \*miss 1 st on front rectangle, 1 ss in next st on front rectangle, 1 ch, miss 1 st on back rectangle, 1 ss in next st on back rectangle, 1 ch, repeat from \* across side to final st on front rectangle, 1 ch, miss final st on back rectangle, 1 ss in corner ch-sp on

back rectangle, 1 ch, 1 ss in corner ch-sp on front rectangle, fasten off.

Next join View 6 (the snow-capped mountains) to View 1. Position the bottom of View 6 so it touches the top of View 1. Place the WS facing together and RS facing outwards, with the edges held ready to crochet them together. Follow instructions for 'joining rectangles' above.

Now join the four squares on the right side to each other to form a long vertical strip and then the squares on the left side to form a long vertical strip. The squares are joined in the same way as the rectangles but because there are 40 sts across you will end on the back square instead each time. Follow instructions for 'joining squares' below.

### JOINING SQUARES

Join **Yarn A** into the outer right corner ch-sp of the front square only, 1 ch, insert hook into corresponding corner ch-sp on back square, make 1 ss followed by 1 ch, 1 ss in first st on front square, 1 ch, miss first st on back square, 1 ss in next st on back square, 1 ch, \*miss 1 st on front square, 1 ss in next st on front square, 1 ch, miss 1 st on back square, 1 ss in next st on back square, 1 ch, repeat from \* across side to final st on back square, 1 ch, miss final st on front square, 1 ss in corner ch-sp on front square, 1 ch, 1 ss in corner ch-sp on back square, fasten off.

Join the 3 strips together following the same joining method. Place the WS facing together and RS facing outwards. Each time a corner ch-sp is reached work into the corner ch-sp of both the front and back square or rectangle as in the 'joining squares' instructions above. Continue to work into alternate sts across.



*Join us next week for The Border: Part One...*