

## Heather on the Moors

*Views across the moors with purple moorland heathers covering much of the landscape. In this view the sun is setting and the silhouette of a single tree can be seen.*

Using **Yarn A**, make 38ch.

**Row 1 (WS)** 1dc in 4th ch from hook (the 3 missed ch count as first dc), 1dc in each ch to end, join with **Yarn B** at end of final st, turn. [36 sts]

*On Rows 2 - 13 do not cut the yarn after changing color, it can be brought up the side and re-joined when next needed.*

**Row 2 (RS)** 3ch (counts as first dc here and throughout), 1dc in next st and in each st to end, join with **Yarn F** at end of final st, turn.

**Row 3 (WS)** 1ch (does not count as st here and throughout), 1sc in each of first 2 sts, (1tr in next st, 1sc in next st) to end, join with **Yarn G** at end of final st, turn.

**Row 4 (RS)** 3ch, (1hdc in next st, 1dc in next st) until final st, 1dc in final st, re-join with **Yarn B** at end of final st, turn.

**Row 5 (WS)** Repeat Row 3 re-joining with **Yarn F** at end of row.

**Row 6 (RS)** Repeat Row 4 re-joining with **Yarn G** at end of row.

**Rows 7 - 12** Repeat Rows 3 - 4 three times more changing colors in sequence, from **Yarn B** to **Yarn F** to **Yarn G**, each time bringing the yarn up from previous rows, at end of Row 12 do not change color.

**Row 13 (WS)** 2ch (counts as first hdc here and throughout), \* 1sc in each of next 4 sts, 1hdc in next st, 1dc in each of next 4 sts, 1hdc in next st, repeat from \* two times, 1sc in each of next 4 sts, 1hdc in final st, re-join with **Yarn B** at end of final st, turn. [36 sts]

*In Row 14 the stitches are worked into the back loop only (blo).*

**Row 14 (RS)** 2ch, \* 1dc in blo of each of next 4 sts, 1hdc in blo of next st, 1sc in blo of each of next 4 sts, 1hdc in blo of next st, repeat from \* two times, 1dc in blo of each of next 4 sts 1hdc in blo of final st, turn.

**Row 15 (WS)** 2ch, \* 1dc in each of next 4 sts, 1hdc in next st, 1sc in each of next 4 sts, 1hdc in next st, repeat from \* two times, 1dc in each of next 4 sts 1hdc in final st, join with **Yarn C** at end of final st, turn.

*In Row 16 the stitches are worked into the back loop only (blo).*

**Row 16 (RS)** 2ch, \* 1sc in blo of each of next 4 sts, 1hdc in blo of next st, 1dc in blo of each of next 4 sts, 1hdc in blo of next st, repeat from \* two times, 1sc in blo of each of next 4 sts, 1hdc in blo of final st, turn. [36 sts]

**Row 17 (WS)** 3ch, 1dc in next st and each st to end, turn.

**Rows 18 - 19** Repeat Row 17, at the end of Row 19 join with **Yarn D**.

**Rows 20 - 21** Repeat Row 17, at the end of Row 21 join with **Yarn E**.

**Rows 22 - 24** Repeat Row 17, at the end of Row 24 fasten off.

### Border

**Round 1 (RS)** Keep RS facing and go back to beginning of Row 24, join **Yarn A** into second st in from the right, 3ch (counts as first dc), 2dc in same st, (skip 2 sts, 3dc in next st) to end, skip final st of side, 2ch (first corner made), rotate work ready to crochet down side edge, continue down side edge with 12 groups of 3dc evenly spaced across the rows to bottom, 2ch (second corner), rotate work ready to crochet across bottom edge, skip base of first st, 3dc in base of next st, (skip base of next 2 sts, 3dc in base of next st) until end of side, skip final st, 2ch (third corner), rotate work ready to crochet up next side edge, continue with 12 groups of 3dc evenly spaced across the rows to the top, 2ch (final corner), sl st to top of first 3 ch, turn. [12 groups of 3-dc on each side with 4 x corner 2-ch-sps]

**Round 2 (WS)** 3ch (counts as first dc), \*(2dc, 1ch, 2dc) in corner ch-sp, 1dc in each st to end of side, repeat from \* three times, sl st to top of first 3 ch, fasten off. [40 sts along top and bottom and 40 sts on each side edge with 4 x corner 1-ch-sps]

## Tree

### Pattern Notes

The tree is made in one continuous piece. The pattern is broken down into stages to identify each part as it's made.

Using **Black** make 9ch.

**Branch 1:** Make a further 9ch, 1 sl st in 2nd ch from hook and in each of next 7 ch, **Trunk:** make 2 ch,

**Branch 2:** 8ch, 1 sl st in 2nd ch

from hook and in each of next 6 ch,

**Trunk:** make 2 ch,

**Branch 3:** 7ch, 1 sl st in 2nd ch from hook and in each of next 5 ch,

**Trunk:** make 2 ch,

**Branch 4:** 5ch, 1 sl st in 2nd ch from hook and in each of next 3 ch,

**Trunk:** make 2 ch,

**Top Branches:** (4ch, 1 sl st in 2nd ch from hook and in each of next 2 ch) three times, Now work back down the trunk, 1 sl st in each of

next 2 ch of trunk, repeat branch 4, 1 sl st in each of next 2 ch of trunk, repeat branch 3, 1 sl st in each of next 2 ch of trunk, repeat branch 2, 1 sl st in each of next 2 ch of trunk, repeat branch 1, 1 sl st in each of next 2 ch, 1 sc in each of next 3 ch, 1 hdc in each of next 4 ch, fasten off leaving a long tail of yarn to sew the tree in place on the square.



## A City View

A room with an urban view. A large city, like the New York skyline, or a smaller town or suburban area. A room with a view that is constantly active, constantly changing and very busy!

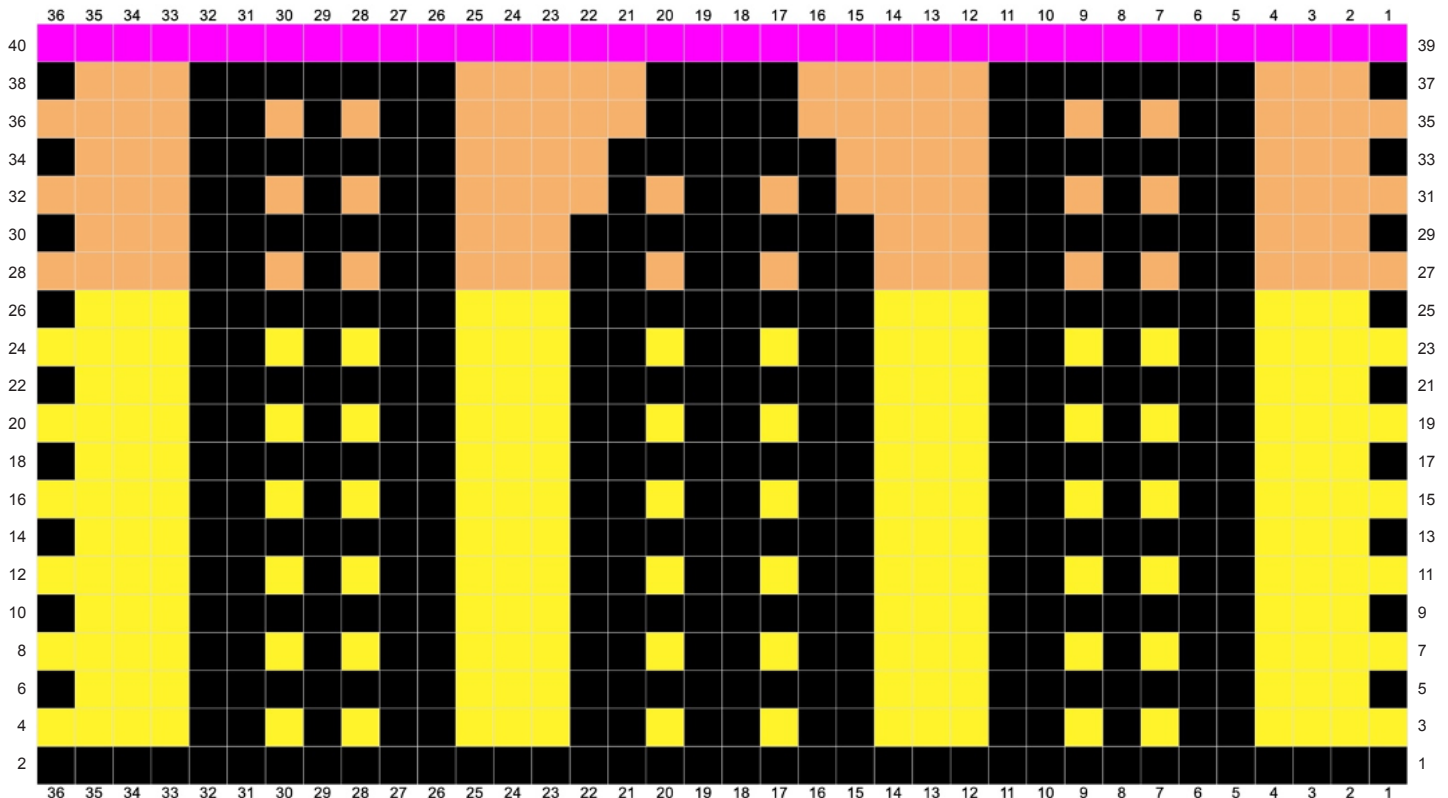
This square is crocheted using the technique of inset Mosaic Crochet. Written instructions continue here but there is also a chart to follow if preferred.

I recommend using half a hook size larger than the hook you're using for the rest of the blanket. Mosaic crochet produces a dense fabric.

On the chart each square represents 1 stitch (either a single crochet, mosaic double crochet or chain-space). Each row on the chart represents TWO rows of crochet. Read RS rows from right to left and WS rows from left to right. It does not matter if you are left handed because the pattern is symmetrical. Each row begins with 1 ch and then 1 sc in first st, and each row ends with 1 sc in final st.

The first square on the RS rows indicates the color to be used for that row. Do not fasten off the yarn at the end of each row, the yarn will be carried up along the side of the work to be joined again on subsequent rows.

On RS rows if the square is the same color as the yarn being used work either a single crochet or mosaic double crochet. If the square is in the contrasting color work 2 chains for 1 square, 3 chains for 2 squares, 4 chains for 3 squares etc and miss the corresponding stitches.



Using **Black** and a hook half a hook size larger, make 37ch.

**Row 1 (RS)** 1 sc in 2nd ch from hook and in each ch to end, turn. [36 sts]

**Row 2 (WS)** 1 ch (does not count as st here and throughout), 1 sc in each st, join with **Yarn C** at end of final st, turn. [36 sts]

**Row 3 (RS)** 1 ch, 1 sc in first 4 sts, 3ch, skip 2 sts, 1 sc in next st, 2ch, skip 1 st, 1 sc in next st, 3ch, skip 2 sts, 1 sc in each of next 3 sts, (3ch, skip 2 sts, 1 sc in next st) 3 times, 1 sc in each of next 2 sts, 3ch, skip 2 sts, 1 sc in next st, 2ch, skip 1 st, 1 sc in next st, 3ch, skip 2 sts, 1 sc in each of next 4 sts, turn.

**Row 4 (WS)** 1 ch, 1 sc in first 4 sts, 3ch, skip 3-ch-sp, 1 sc in next st, 2ch, skip 2-ch-sp, 1 sc in next st, 3ch, skip 3-ch-sp, 1 sc in each of next 3 sts, (3ch, skip 3-ch-sp, 1 sc in next st) 3 times, 1 sc in each of next 2 sts, 3ch, skip 3-ch-sp, 1 sc in next st, 2ch, skip 2-ch-sp, 1 sc in next st, 3ch, skip 3-ch-sp, 1 sc in each of next 4 sts, re-join with **Black** at end of final st, turn.

**Row 5 (RS)** 1 ch, 1 sc in first st, 4ch, skip 3 sts, 1 mdc in each of next 2 sts, 1 sc in next st, 1 mdc in next st, 1 sc in next st, 1 mdc in each of next 2 sts, 4ch, skip 3 sts, (1 mdc in each of next 2 sts, 1 sc in next st) 2 times, 1 mdc in each of next 2 sts, 4ch, skip 3 sts, 1 mdc in each of next 2 sts, 1 sc in next st, 1 mdc in next st, 1 sc in next st, 1 mdc in each of next 2 sts, 4ch, skip 3 sts, 1 sc in final st, turn.

**Row 6 (WS)** 1 ch, 1 sc in first st, 4ch, skip 4-ch-sp, 1 sc in each of

next 7 sts, 4ch, skip 4-ch-sp, 1 sc in each of next 8 sts, 4ch, skip 4-ch-sp, 1 sc in each of next 7 sts, 4ch, skip 4-ch-sp, 1 sc in final st, re-join with **Yarn C** at end of final st, turn.

**Row 7 (RS)** 1 ch, 1 sc in first st, 1 mdc in each of next 3 sts, 3ch, skip 2 sts, 1 sc in next st, 2ch, skip 1 st, 1 sc in next st, 3ch, skip 2 sts, 1 mdc in each of next 3 sts, (3ch, skip 2 sts, 1 sc in next st) 2 times, 3ch, skip 2 sts, 1 mdc in each of next 3 sts, 3ch, skip 2 sts, 1 sc in next st, 2ch, skip 1 st, 1 sc in next st, 3ch, skip 2 sts, 1 mdc in each of next 3 sts, 1 sc in final st, turn.

**Row 8 (WS)** 1 ch, 1 sc in first 4 sts, 3ch, skip 3-ch-sp, 1 sc in next st, 2ch, skip 2-ch-sp, 1 sc in next st, 3ch, skip 3-ch-sp, 1 sc in each of next 3 sts, (3ch, skip 3-ch-sp, 1 sc in next st) 3 times, 1 sc in each of next 2 sts, 3ch, skip 3-ch-sp, 1 sc in next st, 2ch, skip 2-ch-sp, 1 sc in next st, 3ch, skip 3-ch-sp, 1 sc in each of next 4 sts, re-join with **Black** at end of final st, turn.

**Rows 9 – 24** Repeat Rows 5 – 8 four times.

**Rows 25 – 26** Repeat Rows 5 – 6 once more, at the end of Row 26 join with **Yarn D**.

**Rows 27 – 28** Repeat Rows 7 – 8 once more.

**Rows 29 – 30** Repeat Rows 5 – 6 once more, at the end of Row 30 re-join with **Yarn D**.

**Row 31 (RS)** 1 ch, 1 sc in first st, 1 mdc in each of next 3 sts, 3ch, skip 2 sts, 1 sc in next st, 2ch, skip 1 st, 1 sc in next st, 3ch, skip 2 sts, 1 mdc in each of next 3 sts, 1 sc in

next st, 2ch, skip 1 st, 1 sc in next st, 3ch, skip 2 sts, 1 sc in next st, 2ch, skip 1 st, 1 sc in next st, 1 mdc in each of next 3 sts, 3ch, skip 2 sts, 1 sc in next st, 2ch, skip 1 st, 1 sc in next st, 3ch, skip 2 sts, 1 mdc in each of next 3 sts, 1 sc in final st, turn.

**Row 32 (WS)** 1 ch, 1 sc in first 4 sts, 3ch, skip 3-ch-sp, 1 sc in next st, 2ch, skip 2-ch-sp, 1 sc in next st, 3ch, skip 3-ch-sp, 1 sc in each of next 4 sts, 2ch, skip 2-ch-sp, 1 sc in next st, 3ch, skip 3-ch-sp, 1 sc in next st, 2ch, skip 2-ch-sp, 1 sc in each of next 4 sts, 3ch, skip 3-ch-sp, 1 sc in next st, 2ch, skip 2-ch-sp, 1 sc in next st, 3ch, skip 3-ch-sp, 1 sc in each of next 4 sts, re-join with **Black** at end of final st, turn.

**Row 33 (RS)** 1 ch, 1 sc in first st, 4ch, skip 3 sts, 1 mdc in each of next 2 sts, 1 sc in next st, 1 mdc in next st, 1 sc in next st, 1 mdc in each of next 2 sts, 5ch, skip 4 sts, 1 mdc in next st, 1 sc in next st, 1 mdc in each of next 2 sts, 1 sc in next st, 1 mdc in next st, 5ch, skip 4 sts, 1 mdc in each of next 2 sts, 1 sc in next st, 1 mdc in next st, 1 sc in next st, 1 mdc in each of next 2 sts, 4ch, skip 3 sts, 1 sc in final st, turn.

**Row 34 (WS)** 1 ch, 1 sc in first st, 4ch, skip 4-ch-sp, 1 sc in each of next 7 sts, 5ch, skip 5-ch-sp, 1 sc in each of next 6 sts, 5ch, skip 5-ch-sp, 1 sc in each of next 7 sts, 4ch, skip 4-ch-sp, 1 sc in final st, re-join with **Yarn D** at end of final st, turn.

**Row 35 (RS)** 1 ch, 1 sc in first st, 1 mdc in each of next 3 sts, 3ch, skip 2 sts, 1 sc in next st, 2ch, skip 1 st, 1 sc in next st, 3ch, skip 2 sts, 1 mdc in each of next 4 sts, 1 sc in next st, 5ch, skip 4 sts, 1 sc in next

st, 1 mdc in each of next 4 sts, 3ch, skip 2 sts, 1 sc in next st, 2ch, skip 1 st, 1 sc in next st, 3ch, skip 2 sts, 1 mdc in each of next 3 sts, 1 sc in final st, turn.

**Row 36 (WS)** 1ch, 1 sc in first 4 sts, 3ch, skip 3-ch-sp, 1 sc in next st, 2ch, skip 2-ch-sp, 1 sc in next st, 3ch, skip 3-ch-sp, 1 sc in each of next 5 sts, 5ch, skip 5-ch-sp, 1 sc in each of next 5 sts, 3ch, skip 3-ch-sp, 1 sc in next st, 2ch, skip 2-ch-sp, 1 sc in next st, 3ch, skip 3-ch-sp, 1 sc in each of next 4 sts, re-join with **Black** at end of final st, turn.

**Row 37 (RS)** 1ch, 1 sc in first st, 4ch, skip 3 sts, 1 mdc in each of next 2 sts, 1 sc in next st, 1 mdc in next st, 1 sc in next st, 1 mdc in each of next 2 sts, 6ch, skip 5 sts, 1 mdc in each of next 4 sts, 6ch, skip 5 sts, 1 mdc in each of next 2 sts, 1 sc in next st, 1 mdc in next st, 1 sc in next st, 1 mdc in each of next 2 sts, 4ch, skip 3 sts, 1 sc in final st, turn.

**Row 38 (WS)** 1ch, 1 sc in first st, 4ch, skip 4-ch-sp, 1 sc in each of next 7 sts, 6ch, skip 6-ch-sp, 1 sc in each of next 4 sts, 6ch, skip 6-ch-sp, 1 sc in each of next 7 sts, 4ch, skip 4-ch-sp, 1 sc in final st, join with **Yarn E** at end of final st, turn.

**Row 39 (RS)** 1ch, 1 sc in first st, 1 mdc in each of next 3 sts, 1 sc in each of next 7 sts, 1 mdc in each of next 5 sts, 1 sc in each of next 4 sts, 1 mdc in each of next 5 sts, 1 sc in each of next 7 sts, 1 mdc in each of next 3 sts, 1 sc in final st, turn.

**Row 40 (WS)** 1ch, 1 sc in first st and each st to end, turn. Now change back to the hook size used for the rest of the blanket for the remainder of the square.

**Row 41 (RS)** 3ch, 1 dc in next st and each st to end, turn.

**Rows 42 – 44** Repeat Row 41 three times, at the end of Row 44 join with **Yarn A**, turn.

## Border

**Round 1 (RS)** 1 ch (does not count as st), skip first st, sl st into next st, 3ch (counts as first dc), 2dc in same st, (skip 2 sts, 3dc in next st) to end, skip final st of side, 2ch (first corner made), rotate work ready to crochet down side edge, continue down side edge with 12 groups of 3dc evenly spaced across the rows to bottom, 2ch (second corner), rotate work ready to crochet across bottom edge, skip base of first st, 3dc in base of next st, (skip base of next 2 sts, 3dc in base of next st) until end of side, skip final st, 2ch (third corner), rotate work ready to crochet up next side edge, continue with 12 groups of 3dc evenly spaced across the rows, 2ch (final corner), sl st to top of first 3 ch, turn. [12 groups of 3-dc on each side with 4 x corner 2-ch-sps]

**Round 2 (WS)** 3ch (counts as first dc), \*(2dc, 1ch, 2dc) in corner ch-sp, 1dc in each st to end of side, repeat from \* three times, sl st to top of first 3 ch, fasten off. [40 sts along top and bottom and 40 sts on each side edge with 4 x corner 1-ch-sps]



## A Balcony View Across the Lake

*A room with a balcony and a view across the lake...  
spectacular! A balcony framed with plants creating a  
wonderful place to sit and enjoy the view...*

*Pay attention to the color changes throughout. For Rows 2 - 15 the intarsia method of color changing is used for the plants at each side. This ensures neat, crisp color changes, keeping the colors contained to each side and avoids trailing yarn across the work. Each patch of color is crocheted using a different length of yarn.*

*You will need to cut a separate 200cm length of Yarn D for one of the plant pots and a 850cm length of Yarn G for one of the plants. Wind them into little balls. The main ball of color can be used for the other pot and plant.*

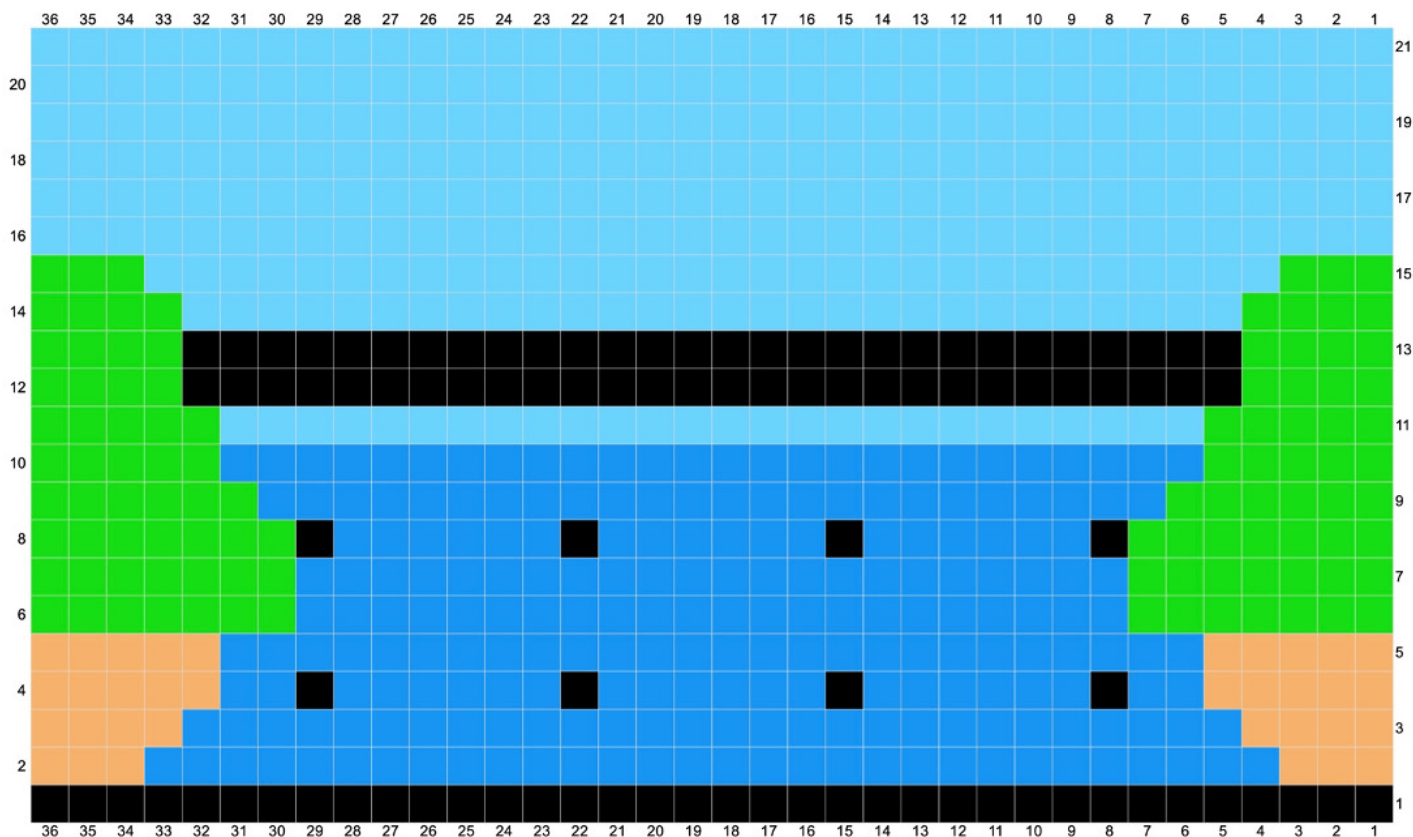
*Make sure you keep the non-working yarn to the back (WS) of the work.*

*In the rows where the balcony railings are crocheted, crochet around the non-working black yarn in-between the raised sts to bring the yarn invisibly along and ready to be re-joined each time.*

*When changing colors join the new color at the final yoh of the previous stitch as indicated. Do not fasten off the previous color used unless indicated otherwise.*

*The chart can be used for rough guidance only for placement of color, not for what stitch is used. There are different stitches, raised stitches and chain spaces used in the pattern which are not shown on the chart.*

*The turning chains count as a stitch throughout unless indicated otherwise. You may want to use a stitch marker in the top of the turning chains making it easier to identify them as the correct stitch to crochet into at the end of the subsequent row.*



Using **Yarn A** make 38ch.

**Row 1 (WS)** 1 dc in 4th ch from hook (the 3 missed ch count as first dc), 1 dc in each ch to end, join with first ball of **Yarn D** at end of final st, turn. [36 sts]

**Row 2 (RS)** 3ch (counts as first dc here and throughout), 1 dc in each of next 2 sts, change to **Yarn H**, 1 dc in each of next 30 sts, change to next ball of **Yarn D**, 1 dc in each of next 3 sts, turn.

**Row 3 (WS)** 3ch, 1 dc in next st, 2dc in next st, change to **Yarn H**, skip next st, 1 dc in each of next 28 sts, change to next ball of **Yarn D**, skip next st, 2dc in next st, 1 dc in each of final 2 sts, turn.

*In Row 4 crochet around the non-working black Yarn in-between the raised sts to bring the yarn invisibly along and ready to be re-joined each time.*

**Row 4 (RS)** 3ch, 1 dc in each of next 2 sts, 2dc in next st, change to **Yarn H**, skip next st, 1 dc in each of next 2 sts, join with **Black** at end of second st, skip next st instead working 1FPquadtr (the stitch starts by wrapping yarn around hook 5 times) around the 8th st in from the right in Row 1 changing back to **Yarn H** at end of st, \* 1 dc in each of next 6 sts, re-join with **Black** at end of 6th st, skip next st instead working 1FPquadtr around the 7th st along from previous raised st in Row 1 changing back to **Yarn H** at end of st, repeat from \* two times, 1 dc in each of next 2 sts, change to next ball of **Yarn D**, skip next st, 2dc in next st, 1 dc in each of final 3 sts, turn.

**Row 5 (WS)** 3ch, 1 dc in each of next 4 sts, change to **Yarn H**, 1 dc in each of next 26 sts, change to next ball of **Yarn D**, 1 dc in each of next 5 sts, join with first ball of **Yarn G** at end of final st, turn.

**Row 6 (RS)** 3ch, 1 RS Popcorn in next st, (1 ch, skip next st, 1 RS Popcorn in next st) two times, 1 dc in next st, change to **Yarn H**, 1 dc in each of next 22 sts, change to second ball of **Yarn G**, 1 dc in next st, 1 RS Popcorn in next st, (1 ch, skip next st, 1 RS Popcorn in next st) two times, 1 dc in final st, turn.

**Row 7 (WS)** 3ch, 1 dc in top of first popcorn, 1 WS popcorn in 1-ch-sp before next popcorn, 1 ch, skip next popcorn, 1 WS popcorn in 1-ch-sp before next popcorn, 1 dc in top of next popcorn, 1 dc in next st, change to **Yarn H**, 1 dc in each of next 22 sts, change to second ball of **Yarn G**, 1 dc in next st, 1 dc in top of next popcorn, 1 WS popcorn in 1-ch-sp before next popcorn, 1 ch, skip next popcorn, 1 WS popcorn in 1-ch-sp before next popcorn, 1 dc in top of next popcorn, 1 dc in final st, turn. In Row 8 crochet around the non-working black yarn in-between the raised sts to bring the yarn invisibly along and ready to be re-joined each time.

**Row 8 (RS)** 3ch, 1 RS Popcorn in next st, 1 ch, skip next popcorn, 1 RS Popcorn in next 1-ch-sp before next popcorn, 1 ch, skip next popcorn, 1 RS Popcorn in next st, 1 dc in next st, change to **Black**, skip next st instead working 1FPquintr (the stitch starts by wrapping yarn around hook 6 times) around the raised st below in Row 4 changing back to **Yarn H** at end of st, \* 1 dc in each of next 6 sts, re-join with **Black** at end of

6th st, skip next st instead working 1FPquintr around the next raised st below in Row 4 changing back to **Yarn H** at end of st, repeat from \* two times changing to next ball of **Yarn G** at end of final raised st, 1 dc in next st, 1 RS Popcorn in next st, 1 ch, skip next popcorn, 1 RS Popcorn in next 1-ch-sp before next popcorn, 1 ch, skip next popcorn, 1 RS Popcorn in next st, 1 dc in final st, turn.

**Row 9 (WS)** 3ch, 1 dc in top of first popcorn, 1 WS popcorn in 1-ch-sp before next popcorn, 1 ch, skip next popcorn, 1 WS popcorn in 1-ch-sp before next popcorn, 1 dc in top of next popcorn, change to **Yarn H**, 1 dc in each of next 24 sts, change to next ball of **Yarn G**, 1 dc in top of next popcorn, 1 WS popcorn in 1-ch-sp before next popcorn, 1 ch, skip next popcorn, 1 WS popcorn in 1-ch-sp before next popcorn, 1 dc in top of next popcorn, 1 dc in final st, turn.

**Row 10 (RS)** 3ch, 1 RS Popcorn in next st, 1 ch, skip next popcorn, 1 RS Popcorn in next 1-ch-sp before next popcorn, 1 dc in top of next popcorn, change to **Yarn H**, 1 dc in each of next 26 sts, change to next ball of **Yarn G**, 1 dc in top of next popcorn, 1 RS Popcorn in next 1-ch-sp before next popcorn, 1 ch, skip next popcorn, 1 RS Popcorn in next st, 1 dc in final st, turn.

**Row 11 (WS)** 3ch, 1 dc in top of first popcorn, 1 WS popcorn in 1-ch-sp before next popcorn, 1 dc in top of next popcorn, 1 dc in next st, change to **Yarn J**, 1 dc in each of next 26 sts, change to next ball of **Yarn G**, 1 dc in next st, 1 dc in top of next popcorn, 1 WS popcorn in 1-ch-sp before next popcorn, 1 dc in top of next popcorn, 1 dc in final st, turn.

**Row 12 (RS)** 3ch, 1 RS Popcorn in next st, 1 RS Popcorn in top of next popcorn, 1dc in next st, change to **Black**, 1dc in each of next 3 sts, skip next st instead working 1FPquadtr around the raised st below in Row 8, \* 1dc in each of next 6 sts, skip next st instead working 1FPquadtr around the next raised st below in Row 8, repeat from \* two times, 1dc in each of next 3 sts, change to next ball of **Yarn G**, 1dc in next st, 1 RS Popcorn in top of next popcorn, 1 RS Popcorn in next st, 1dc in final st, turn.

**Row 13 (WS)** 1ch (does not count as st), 1sc in first st, 1sc in top of each of next 2 popcorns, 1sc in next st, change to **Black**, 1sc in each of next 3 sts, 1BPhdc around next raised st, \* 1sc in each of next 6 sts, 1BPhdc around next raised

st, repeat from \* two times, 1sc in each of next 3 sts, change to **Yarn G**, 1sc in next st, 1sc in top of each of next 2 popcorns, 1sc in final st, turn.

**Row 14 (RS)** 3ch, 1 RS Popcorn in each of next 2 sts, 1dc in next st, change to **Yarn J**, 1dc in blo of each of next 28 sts, change to **Yarn G**, 1dc in next st, 1 RS Popcorn in each of next 2 sts, 1dc in final st, turn.

**Row 15 (WS)** 3ch, 1 WS popcorn in top of first popcorn, 1dc in top of next popcorn, change to **Yarn J**, 1dc in each of next 30 sts, change to next ball of **Yarn G**, 1dc in top of next popcorn, 1 WS popcorn in top of next popcorn, 1dc in final st, join with **Yarn J** at end of final st, turn.

**Row 16 (RS)** 3ch, 1dc in top of next popcorn, 1dc in each of next 32 sts, 1dc in top of next popcorn, 1dc in final st, turn.

**Row 17 (WS)** 3ch, 1dc in next st and each st to end, turn.

**Rows 18 – 21** Repeat Row 17 four times, at the end of Row 21 join with **Yarn A**, turn.

### Border

**Round 1 (RS)** 1ch (does not count as st), skip first st, sl st into next st, 3ch (counts as first dc), 2dc in same st, (skip 2 sts, 3dc in next st) to end, skip final st of side, 2ch (first corner made), rotate work ready to crochet down side edge, continue down side edge with 12 groups of 3dc evenly spaced across the rows to bottom, 2ch (second corner), rotate work ready to crochet across bottom edge, skip base of first st, 3dc in base of next st, (skip base of next 2 sts, 3dc in base of next st) until end of side, skip final st, 2ch (third corner), rotate work ready to crochet up next side edge, continue with 12 groups of 3dc evenly spaced across the rows, 2ch (final corner), sl st to top of first 3 ch, turn. [12 groups of 3-dc on each side with 4 x corner 2-ch-sps]

**Round 2 (WS)** 3ch (counts as first dc), \*(2dc, 1ch, 2dc) in corner ch-sp, 1dc in each st to end of side, repeat from \* three times, sl st to top of first 3 ch, fasten off. [40 sts along top and bottom and 40 sts on each side edge with 4 x corner 1-ch-sps]



*Join us next week for Ceiling Rose...*