

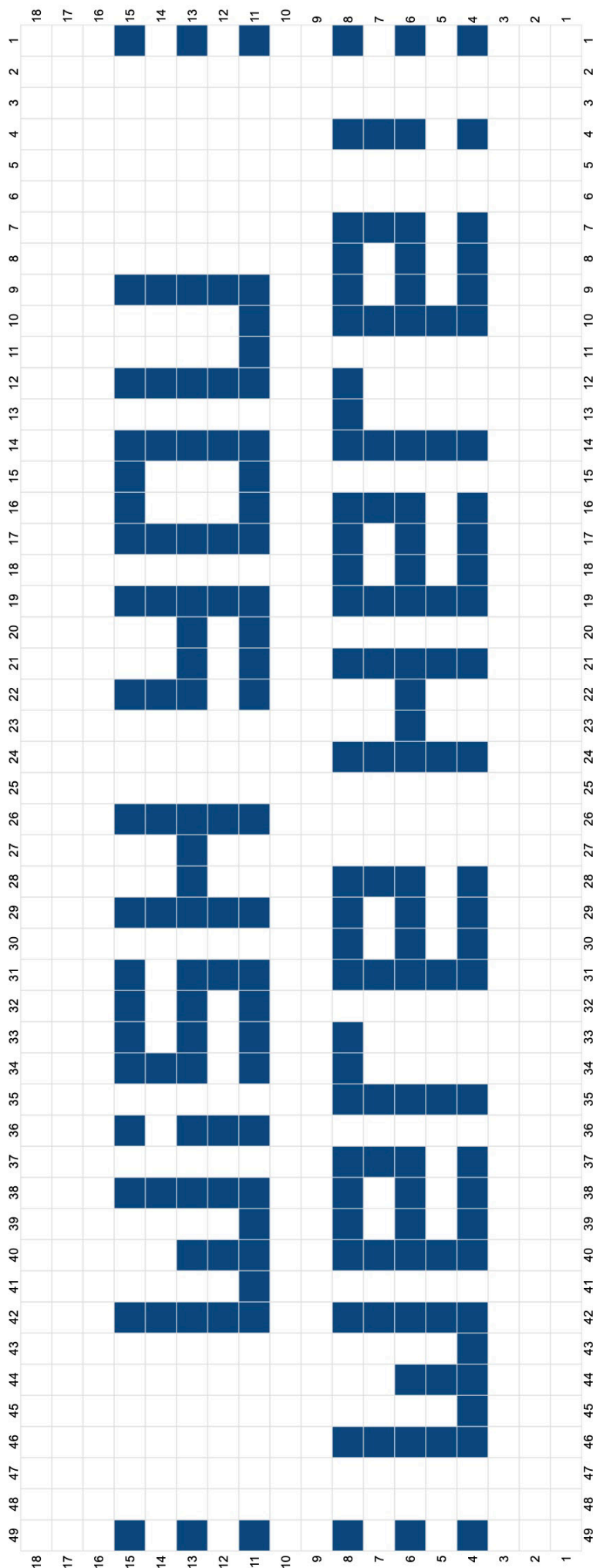
Postcard Five (make 2)

Another message in Mosaic Crochet! "Wish you were here!" - the classic postcard phrase. As we write to loved ones, we wish they could be there with us...

Just like Postcard Three, this postcard is crocheted using the technique of inset Mosaic Crochet. Written instructions continue here but there is also a chart to follow if preferred.

On the chart each square represents 1 stitch (either a double crochet, mosaic treble or chain-space). Each row on the chart represents TWO rows of crochet. Read RS rows from right to left and WS rows from left to right. Each row begins with 1 ch and then 1 dc in first st, and each row ends with 1 dc in final st.

The first square on the RS rows indicates the colour to be used for that row. Do not fasten off the yarn at the end of each row, the yarn will be carried up along the side of the work to be joined again on subsequent rows.



On RS rows if the square is the same colour as the yarn being used work either a double crochet or mosaic treble. If the square is in the contrasting colour work 2 chains for 1 square, 3 chains for 2 squares, 4 chains for 3 squares etc. and miss the corresponding stitches.

Using Yarn E make 50ch.

Row 1 (RS) 1 dc in 2nd ch from hook and in each ch to end, turn. [49 sts]

Row 2 (WS) 1 ch (does not count as st here and throughout), 1 dc in each st, turn. [49 sts]

Rows 3 - 5 1 ch, 1 dc in each st, turn.

Row 6 (WS) 1 ch, 1 dc in each st, join with Yarn G at end of final st, turn. [49 sts]

Row 7 (RS) 1 ch, 1 dc in first st, 3ch, miss 2 sts, 1 dc in next st, 3ch, miss 2 sts, 1 dc in each of next 4 sts, 4ch, miss 3 sts, 1 dc in next st, 2ch, miss 1 st, 1 dc in each of next 4 sts, 2ch, miss 1 st, 1 dc in next st, 3ch, miss 2 sts, 1 dc in next st, 4ch, miss 3 sts, 1 dc in each of next 4 sts, 4ch, miss 3 sts, 1 dc in next st, 2ch, miss 1 st, 1 dc in each of next 4 sts, 2ch, miss 1 st, 1 dc in each of next 5 sts, 3ch, miss 2 sts, 1 dc in final st, turn.

Row 8 (WS) 1 ch, 1 dc in first st, 3ch, miss 3-ch-sp, 1 dc in each of next 5 sts, 2ch, miss 2-ch-sp, 1 dc in each of next 4 sts, 2ch, miss 2-ch-sp, 1 dc in next st, 4ch, miss 4-ch-sp, 1 dc in each of next 4 sts, 4ch, miss 4-ch-sp, 1 dc in next st, 3ch, miss 3-ch-sp, 1 dc in next st, 2ch, miss 2-ch-sp, 1 dc in each of next 4 sts, 2ch, miss 2-ch-sp,

1 dc in next st, 4ch, miss 4-ch-sp, 1 dc each of next 4 sts, 3ch, miss 3-ch-sp, 1 dc in next st, 3ch, miss 3-ch-sp, 1 dc in final st, join with Yarn E at end of final st, turn.

Row 9 (RS) 1 ch, 1 dc in first st, 1 mtr in each of next 2 sts, 1 dc in next st, 1 mtr in each of next 2 sts, 1 dc in each of next 3 sts, 2ch, miss 1 st, 1 mtr in each of next 3 sts, 2ch, miss 1 st, 1 mtr in next st, 1 dc in each of next 3 sts, 2ch, miss 1 st, 1 mtr in each of next 2 sts, 2ch, miss 1 st, 1 mtr in each of next 3 sts, 1 dc in each of next 3 sts, 2ch, miss 1 st, 1 mtr in each of next 3 sts, 2ch, miss 1 st, 1 mtr in next st, (2ch, miss 1 st, 1 dc in next st) two times, 2ch, miss 1 st, 1 mtr in each of next 2 sts, 1 dc in final st, turn.

Row 10 (WS) 1 ch, 1 dc in first st and each of next 2 sts, (2ch, miss 2-ch-sp, 1 dc in next st) three times, 2ch, miss 2-ch-sp, 1 dc in each of next 4 sts, 2ch, miss 2-ch-sp, 1 dc in each of next 3 sts, 2ch, miss 2-ch-sp, 1 dc in each of next 6 sts, 2ch, miss 2-ch-sp, 1 dc in each of next 2 sts, 2ch, miss 2-ch-sp, 1 dc in next st, 2ch, miss 2-ch-sp, 1 dc in each of next 4 sts, 2ch, miss 2-ch-sp, 1 dc in each of next 3 sts, 2ch, miss 2-ch-sp, 1 dc in each of next 9 sts, join with Yarn G at end of final st, turn.

Row 11 (RS) 1 ch, 1 dc in first st, 3ch, miss 2 sts, 1 dc in next st, 3ch, miss 2 sts, 1 dc in each of next 3 sts, 1 mtr in next st, 4ch, miss 3 sts, 1 mtr in next st, 2ch, miss 1 st, 1 dc in each of next 3 sts, 1 mtr in next st, 2ch, miss 1 st, 1 mtr in next st, 1 dc in each of next 2 sts, 1 mtr in next st, 4ch, miss 3 sts, 1 dc in each of next 3 sts, 1 mtr in next

st, 4ch, miss 3 sts, 1 mtr in next st, 2ch, miss 1 st, 1 dc in each of next 3 sts, 1 mtr in next st, (2ch, miss 1 st, 1 mtr in next st) three times, 3ch, miss 2 sts, 1 dc in final st, turn.

Row 12 (WS) 1 ch, 1 dc in first st, 3ch, miss 3-ch-sp, (1 dc in next st, 2ch, miss 2-ch-sp) three times, 1 dc in each of next 4 sts, 2ch, miss 2-ch-sp, 1 dc in next st, (4ch, miss 4-ch-sp, 1 dc in each of next 4 sts) two times, 2ch, miss 2-ch-sp, 1 dc in each of next 4 sts, 2ch, miss 2-ch-sp, 1 dc in next st, 4ch, miss 4-ch-sp, 1 dc each of next 4 sts, 3ch, miss 3-ch-sp, 1 dc in next st, 3ch, miss 3-ch-sp, 1 dc in final st, join with Yarn E at end of final st, turn.

Row 13 (RS) 1 ch, 1 dc in first st, 1 mtr in each of next 2 sts, 2ch, miss 1 st, 1 mtr in each of next 2 sts, 2ch, miss 1 st, 1 dc in each of next 3 sts, 2ch, miss 1 st, 1 mtr in next st, 2ch, miss 1 st, 1 dc in each of next 2 sts, 2ch, miss 1 st, 1 mtr in next st, 2ch, miss 1 st, 1 dc in each of next 2 sts, 2ch, miss 1 st, 1 mtr in each of next 3 sts, 2ch, miss 1 st, 1 dc in each of next 2 sts, 2ch, miss 1 st, 1 mtr in each of next 3 sts, 2ch, miss 1 st, 1 dc in each of next 2 sts, (2ch, miss 1 st, 1 mtr in next st) two times, 1 dc in next st, 1 mtr in next st, 2ch, miss 1 st, 1 mtr in each of next 2 sts, 1 dc in final st, turn.

Row 14 (WS) 1 ch, 1 dc in first st and each of next 2 sts, 2ch, miss 2-ch-sp, 1 dc in each of next 3 sts, 2ch, miss 2-ch-sp, 1 dc in next st, 2ch, miss 2-ch-sp, 1 dc in each of next 2 sts, 2ch, miss 2-ch-sp, 1 dc in next st, 2ch, miss 2-ch-sp, 1 dc in each of next 3 sts, 2ch, miss 2-ch-sp, 1 dc in each of next 2 sts,

2ch, miss 2-ch-sp, 1dc in each of next 3 sts, 2ch, miss 2-ch-sp, 1dc in each of next 2 sts, 2ch, miss 2-ch-sp, 1dc in next st, 2ch, miss 2-ch-sp, 1dc in each of next 2 sts, 2ch, miss 2-ch-sp, 1dc in next st, 2ch, miss 2-ch-sp, 1dc in each of next 3 sts, (2ch, miss 2-ch-sp, 1dc in each of next 2 sts) two times, 2ch, miss 2-ch-sp, 1dc in each of next 3 sts, join with Yarn G at end of final st, turn.

Row 15 (RS) 1ch, 1dc in first st, (3ch, miss 2 sts, 1mtr in next st) two times, 1dc in each of next 2 sts, 1mtr in next st, 2ch, miss 1 st, 1dc in each of next 2 sts, 1mtr in next st, 2ch, miss 1 st, 1mtr in next st, 1dc in each of next 2 sts, 1mtr in next st, 2ch, miss 1 st, 1mtr in next st, 3ch, miss 2 sts, 1mtr in next st, 4ch, miss 3 sts, 1mtr in next st, 1dc in each of next 2 sts, 1mtr in next st, 2ch, miss 1 st, 1dc in each of next 2 sts, 1mtr in next st, 2ch, miss 1 st, 1mtr in next st, 1dc in each of next 2 sts, 1mtr in next st, 2ch, miss 1 st, 1mtr in next st, 4ch, miss 3 sts, 1mtr in next st, 3ch, miss 2 sts, 1dc in final st, turn.

Row 16 (WS) 1ch, 1dc in first st, 3ch, miss 3-ch-sp, 1dc in next st, 4ch, miss 4-ch-sp, 1dc in next st, 2ch, miss 2-ch-sp, 1dc in each of next 4 sts, 2ch, miss 2-ch-sp, 1dc in each of next 3 sts, 2ch, miss 2-ch-sp, 1dc in each of next 4 sts, 4ch, miss 4-ch-sp, 1dc in next st, 3ch, miss 3-ch-sp, 1dc in next st, 2ch, miss 2-ch-sp, 1dc in each of next 4 sts, 2ch, miss 2-ch-sp, 1dc in each of next 3 sts, 2ch, miss 2-ch-sp, 1dc each of next 4 sts, 3ch, miss 3-ch-sp, 1dc in next st, 3ch, miss 3-ch-sp, 1dc in final st, join with Yarn E at end of final st, turn.

Row 17 (RS) 1ch, 1dc in first st, 1mtr in each of next 2 sts, 1dc in next st, 1mtr in each of next 2 sts, 1dc in each of next 4 sts, 1mtr in next st, 1dc in each of next 3 sts, 1mtr in next st, 1dc in each of next 4 sts, 1mtr in next st, 1dc in next st, 1mtr in each of next 2 sts, 1dc in next st, 1mtr in each of next 3 sts, 1dc in each of next 4 sts, 1mtr in next st, 1dc in each of next 3 sts, 1mtr in next st, 1dc in each of next 4 sts, 1mtr in next st, 1dc in next st, 1mtr in each of next 3 sts, 1dc in next st, 1mtr in each of next 2 sts, 1dc in final st, turn.

Row 18 (WS) 1ch, 1dc in each st, turn. [49 sts]

Row 19 (RS) 1ch, 1dc in each st, turn.

Row 20 (WS) 1ch, 1dc in each st, join with Yarn G at end of final st, turn. [49 sts]

Row 21 (RS) 1ch, 1dc in first st, 8ch, miss 7 sts, 1dc in each of next 4 sts, (2ch, miss 1 st, 1dc in each of next 4 sts) two times, 4ch, miss 3 sts, 1dc in next st, 3ch, miss 2 sts, 1dc in next st, 2ch, miss 1 st, 1dc in each of next 4 sts, 2ch, miss 1 st, 1dc in next st, 2ch, miss 1 st, 1dc in each of next 5 sts, 7ch, miss 6 sts, 1dc in final st, turn.

Row 22 (WS) 1ch, 1dc in first st, 7ch, miss 7-ch-sp, 1dc in each of next 5 sts, 2ch, miss 2-ch-sp, 1dc in next st, 2ch, miss 2-ch-sp, 1dc in each of next 4 sts, 2ch, miss 2-ch-sp, 1dc in next st, 3ch, miss 3-ch-sp, 1dc in next st, 4ch, miss 4-ch-sp, 1dc in each of next 4 sts, (2ch, miss 2-ch-sp, 1dc in each of next 4 sts) two times, 8ch, miss 8-ch-sp, 1dc in final st, join with Yarn E at end of final st, turn.

Row 23 (RS) 1ch, 1dc in first st, 1mtr in each of next 7 sts, 2ch, miss 1 st, 1dc in each of next 2 sts, 2ch, miss 1 st, 1mtr in next st, 2ch, miss 1 st, 1dc in each of next 2 sts, 2ch, miss 1 st, 1mtr in next st, 2ch, miss 1 st, 1dc in each of next 3 sts, 1mtr in each of next 3 sts, 2ch, miss 1 st, 1mtr in each of next 2 sts, 2ch, miss 1 st, 1mtr in next st, 2ch, miss 1 st, 1dc in each of next 3 sts, 1mtr in next st, 2ch, miss 1 st, 1mtr in next st, (2ch, miss 1 st, 1dc in next st) two times, 2ch, miss 1 st, 1mtr in each of next 6 sts, 1dc in final st, turn.

Row 24 (WS) 1ch, 1dc in first st and each of next 6 sts, (2ch, miss 2-ch-sp, 1dc in next st) three times, 2ch, miss 2-ch-sp, 1dc in each of next 4 sts, 2ch, miss 2-ch-sp, 1dc in next st, 2ch, miss 2-ch-sp, 1dc in each of next 2 sts, 2ch, miss 2-ch-sp, 1dc in each of next 6 sts, *2ch, miss 2-ch-sp, 1dc in next st, 2ch, miss 2-ch-sp, 1dc in each of next 2 sts, repeat from * once more, 2ch, miss 2-ch-sp, 1dc in each of next 8 sts, join with Yarn G at end of final st, turn.

Row 25 (RS) 1ch, 1dc in first st, 8ch, miss 7 sts, 1mtr in next st, 3ch, miss 2 sts, 1mtr in next st, 2ch, miss 1 st, 1mtr in next st, 3ch, miss 2 sts, 1mtr in next st, 2ch, miss 1 st, 1mtr in next st, 1dc in each of next 3 sts, 4ch, miss 3 sts, 1mtr in next st, 1dc in each of next 2 sts, 1mtr in next st, 2ch, miss 1 st, 1mtr in next st, 1dc in each of next 3 sts, (2ch, miss 1 st, 1mtr in next st) four times, 7ch, miss 6 sts, 1dc in final st, turn.

Row 26 (WS) 1ch, 1dc in first st, 7ch, miss 7-ch-sp, (1dc in next st, 2ch, miss 2-ch-sp) four times, 1dc in each of next 4 sts, 2ch, miss 2-ch-sp, 1dc in each of next 4 sts, 4ch, miss 4-ch-sp, 1dc in each of next 4 sts, * 2ch, miss 2-ch-sp, 1dc in next st, 3ch, miss 3-ch-sp, 1dc in next st, repeat from * once more, 8ch, miss 8-ch-sp, 1dc in final st, join with Yarn E at end of final st, turn.

Row 27 (RS) 1ch, 1dc in first st, 1mtr in each of next 7 sts, * 2ch, miss 1 st, 1mtr in each of next 2 sts, 2ch, miss 1 st, 1mtr in next st, repeat from * once more, 2ch, miss 1 st, 1dc in each of next 2 sts, 2ch, miss 1 st, 1mtr in each of next 3 sts, 2ch, miss 1 st, 1dc in each of next 2 sts, 2ch, miss 1 st, 1mtr in next st, 1dc in each of next 3 sts, (2ch, miss 1 st, 1mtr in next st, 1dc in next st, 1mtr in next st) two times, 2ch, miss 1 st, 1mtr in each of next 6 sts, 1dc in final st, turn.

Row 28 (WS) 1ch, 1dc in first st and each of next 6 sts, (2ch, miss 2-ch-sp, 1dc in each of next 3 sts) two times, 2ch, miss 2-ch-sp, 1dc in each of next 4 sts, 2ch, miss 2-ch-sp, 1dc in each of next 2 sts, 2ch, miss 2-ch-sp, 1dc in each of next 3 sts, * 2ch, miss 2-ch-sp, 1dc in each of next 2 sts, 2ch, miss 2-ch-sp, 1dc in next st, repeat from * once more, 2ch, miss 2-ch-sp, 1dc in each of next 2 sts, 2ch, miss 2-ch-sp, 1dc in each of next 8 sts, join with Yarn G at end of final st, turn.

Row 29 (RS) 1ch, 1dc in first st, 8ch, miss 7 sts, 1mtr in next st, 3ch, miss 2 sts, 1mtr in next st, 2ch, miss 1 st, 1mtr in next st, 1dc in each of next 2 sts, 1mtr in next st, 2ch, miss 1 st, 1mtr in next st, 3ch, miss 2 sts, 1mtr in next st,

4ch, miss 3 sts, 1mtr in next st, 3ch, miss 2 sts, 1mtr in next st, 2ch, miss 1 st, 1dc in each of next 3 sts, 1mtr in next st, 2ch, miss 1 st, 1dc in next st, 2ch, miss 1 st, 1mtr in next st, 4ch, miss 3 sts, 1mtr in next st, 7ch, miss 6 sts, 1dc in final st, turn.

Row 30 (WS) 1ch, 1dc in first st, 7ch, miss 7-ch-sp, 1dc in next st, 4ch, miss 4-ch-sp, (1dc in next st, 2ch, miss 2-ch-sp) two times, 1dc in each of next 4 sts, 2ch, miss 2-ch-sp, 1dc in next st, 3ch, miss 3-ch-sp, 1dc in next st, 4ch, miss 4-ch-sp, 1dc in next st, 3ch, miss 3-ch-sp, 1dc in next st, 2ch, miss 2-ch-sp, 1dc in each of next 4 sts, 2ch, miss 2-ch-sp, 1dc in next st, 3ch, miss 3-ch-sp, 1dc in next st, 8ch, miss 8-ch-sp, 1dc in final st, join with Yarn E at end of final st, turn.

Row 31 (RS) 1ch, 1dc in first st, 1mtr in each of next 7 sts, 1dc in next st, 1mtr in each of next 2 sts, 1dc in next st, 1mtr in next st, 1dc in each of next 4 sts, 1mtr in next st, 1dc in next st, 1mtr in each of next 2 sts, 1dc in next st, 1mtr in each of next 3 sts, 1dc in next st, 1mtr in each of next 2 sts, 1dc in next st, 1mtr in next st, 1dc in each of next 4 sts, (1mtr in next st, 1dc in next st) two times, 1mtr in each of next 3 sts, 1dc in next st, 1mtr in each of next 6 sts, 1dc in final st, turn.

Row 32 (WS) 1ch, 1dc in each st, turn. [49 sts]

Rows 33 - 35 1ch, 1dc in each st, turn.

Row 36 (WS) 1ch, 1dc in each st, fasten off. [49 sts]

Border

Round 1 (RS) Join Yarn G into final st made in Row 36, 1ch (does not count as st), 1dc in same st, 1dc in each st across top edge, 2ch, rotate work ready to crochet across side edge, work 25 dc sts evenly down side edge working into the sides of the rows, 2ch, rotate work ready to crochet across bottom edge, 1dc in base of each st along bottom edge, 2ch, rotate work ready to crochet across next side edge, work 25 dc sts evenly across side edge, 2ch, ss to first dc, fasten off. [49 sts on top and bottom, 25 sts on each side edge with 4 x corner 2-ch-sps]

Round 2 (RS) Join Yarn E into any corner ch-sp, 5ch (counts as 1 tr and 2 ch), 1tr in same corner ch-sp, * 1tr in each st to end of side, (1tr, 2ch, 1tr) in corner ch-sp, repeat from * two times, 1tr in each st to end, ss to third ch of beginning 5 ch, fasten off. [51 sts on top and bottom, 27 sts on each side edge with 4 x corner 2-ch-sps]

Heart

Using Yarn H make 4ch, ss to first ch to join into a ring (or make a magic circle).

Round 1 (RS) 1ch (does not count as st), 6dc into the ring, ss to first dc to join. [6 sts]

Round 2 3ch, (1dtr, 3tr) all in next st, 1dc in next st, (1dc, 2ch, 1dc) all in next st, 1dc in next st, (3tr, 1dtr) in next st, 3ch, ss to st at base of beginning 3 ch, fasten off leaving a long tail to sew heart onto postcard. Using photo as a guide, sew heart onto postcard and weave in ends.



Vintage Heart Square (make 4)

Follow instructions for Vintage Heart Square in Week 2 to crochet four final corner squares.



Join us next week for Joining the Squares & Border