

Outer border of Central Blocks:

Useful Notes: This border is worked in the round, with RS always facing, once all 4 corner panels have been completed.

For this section you need 3 colours to hand, (F)Petrol, (A) Mustard and (H)Cream.

For Blocks 1, 3, 5, 7, and 9 you need Petrol and Mustard.

For Blocks 2, 4, 6 and 8 you need Petrol and Cream.

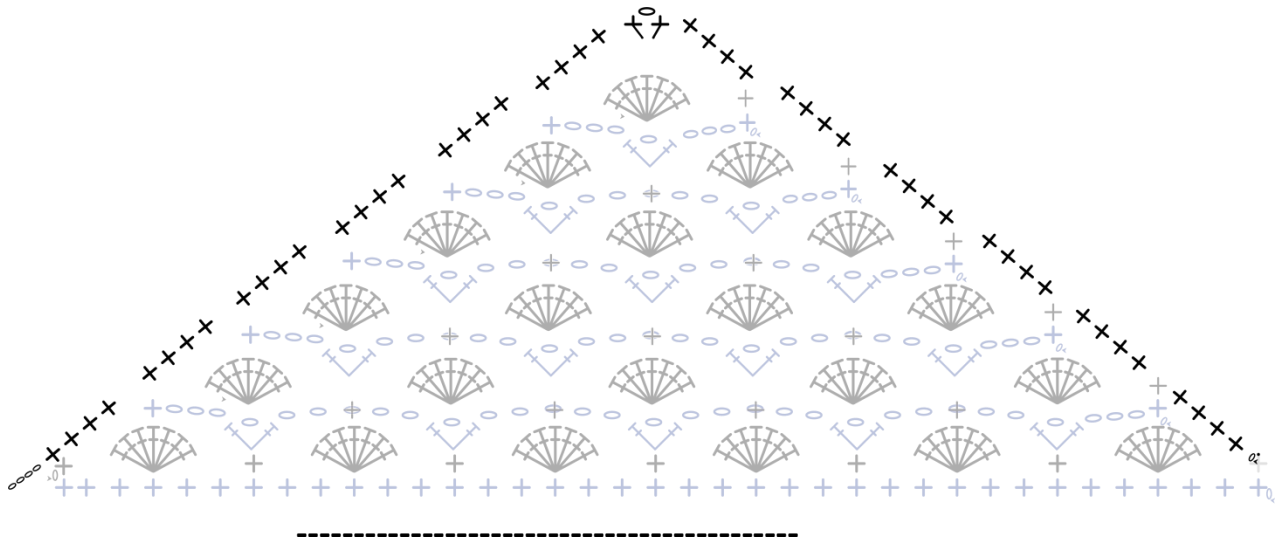
A simple way to know you are working the correct colour is where the Bobble row created in Instalment 3 is Cream, you are using Mustard for the highlight row, and where the Bobble row is Mustard you are using Cream.

Foundation Round: With RS facing, join yarn F into marked st of Row 3 of the Corner Panel, ch1 (does not count as a st), working up the side of the corner panel, *work 4 dc into the side of each shell (24 sts), work (1dc, ch1, 1dc) in top of shell in Row 13, work 4dc into side of each shell working down the corner panel (you will now have 50 sts), ch4 to cross from triangle panel to next; rep from * to end, ss into beg ch1 to join. 200 sts

Break yarn F.

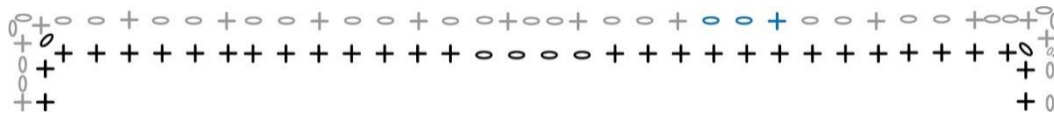


Image shows the gap where this round joins the corner triangle borders together for the border.



Round 1: Join yarn H (A) to any corner 1ch-sp, ch1, *(1dc, ch2, 1dc) into 1ch-sp, ch2, miss 1dc, [1dc in next dc, ch2, miss 2 dc] 8 times, (1dc, ch2, 1dc, ch2) in 4ch-sp, miss 1dc, [1dc in next dc, ch2, miss 2 dc] 8 times; rep from * to end, join with ss to top of beg ch1. 80 2ch-sps

Break yarn H (A).



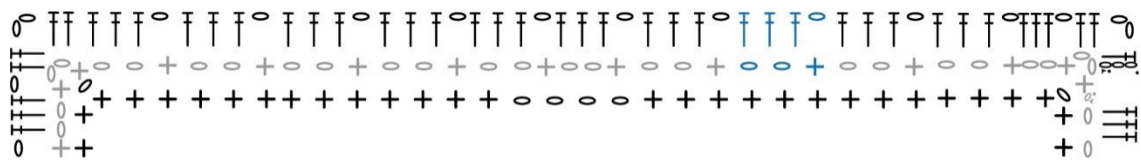
(Repeat blue stitches)





Round 2: Join yarn F in any corner 2ch-sp, ch3 (counts as tr), (1tr, ch2, 2tr) in same space, *(ch1, 3tr) in each 2ch-sp to corner, (2tr, ch2, 2tr) in corner; rep from * to last side, (ch1, 3tr) in each 2ch-sp to end, ss to join. 80 ch-sps

Break yarn F.



(Repeat blue stitches)





Joining Squares to form Blanket

Layout the squares using the diagram provided and pin them together (I use locking stitch markers for this). Pinning them together helps prevent them accidentally being joined in the wrong order, ask me how I know!

It is your choice how to join these squares so long as you use a join that does not add any width to the seam.

I recommend holding the RS facing and working a slipped stitch seam working through the outside loops only of each stitch.

